

Matching Gift

Challenge

**Some special
Partners In Hope
have issued a challenge
to everyone!**

**They will MATCH
your gift
DOLLAR FOR DOLLAR
up to \$60,000**

All gifts postmarked or
made online by
May 31st
are eligible to be matched
(up to \$60,000)

**Don't miss this opportunity
to DOUBLE the IMPACT
of your donation.
Send your gift today!**

Mail your gift to PO Box 965,
New Castle, PA 16103-0965
or donate online at
www.cityrescuemission.org

CARING MINISTRIES OF THE MISSION

Family Care Ministry

Provides emergency food and other
assistance to families going
through difficult times.

True Life Men's Ministry

Offers temporary shelter to homeless men
seeking to gain housing and employment;
Offers Christ-centered residential
life/addiction recovery and
discipleship programs; serves one
meal 365 days a year that is open to
anyone who has a need.

Covenant House Ministry

A safe, temporary (30-day) shelter for
homeless women and families where they
can heal, think, pray and plan.

Aftercare Ministry

Provides follow-up mentoring as clients
transition out of Mission programs; trains
local churches to do the same.

Youth Ministry at Sankey Center

Structured after-school and summer
programs offering educational, recrea-
tional, and spiritual activities for youth.



www.cityrescuemission.org

319 S. Croton Avenue
P.O. Box 965
New Castle, PA
16103-0965
724-652-4321

A copy of the official registration and financial information of the
City Rescue Mission of New Castle may be obtained from the Pennsylvania
Department of State by calling toll free within Pennsylvania,
1-800-732-0999. Registration does not imply endorsement.

APRIL 2010

THE



FOR OUR



HELPING YOU...

HELP US...

HELP OTHERS

**FEEDING THE HUNGRY
SHELTERING THE HOMELESS
OFFERING HOPE**

www.cityrescuemission.org

Practical Ways You Can Help During April

Help Your Neighbors in Need by Donating the Following:

Family Care Ministry Needs

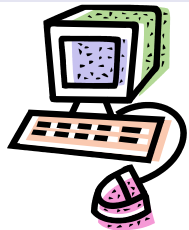
Cereal
Spaghetti & Spaghetti Sauce
Mac & Cheese
Canned Tuna
Rice
Sloppy Joe Mix
Instant Potatoes
Canned Beans
Peanut Butter & Jelly
Coffee
Juice

Covenant House Ministry Needs

Prepared/Leftover Event Food
Laundry Detergent
Bleach
Sugar
Paper Cups
Hanging Flower Baskets for Patio

Check out our web site:

www.cityrescuemission.org



Learn more about us,
watch our new video or
donate online!

True Life Men's Ministry Needs

Phone Cards
Blue Jeans or Khaki Pants
Size 38, 40, 42 (new or gently used)
Men's Shower Shoes
Rubber Bath Mats
New Box Fans
White and Brown Sugar
Mayonnaise , Ketchup
Salad Dressing , Vegetable Oil
Metal Forks, Knives & Spoons
(new or gently used)

Sankey Youth Ministry Needs

Playground, Volley, Kick Balls
Bandages & First Aid Cream

PRODUCT DRIVE FOR APRIL

PAPER PRODUCTS

Toilet Paper, Paper Towels,
Tissues, Napkins

Collect at your church,
business or individually.
Drop your donations at the
Men's Ministry Front Desk or
Family Care Ministry.

Volunteer

Tutors/Coaches/Crafts for children at the Sankey Center's After-School Program; Monday through Thursday only, 3:30—5 pm. (elementary) or 6-8pm (teens).

Financial and Life Skills Teachers needed for our Men's Ministry.

Strong men of faith who will befriend and mentor the gentlemen in our Men's Ministry programs.

Piano Player(s) needed for 8am weekday or 7pm Sunday chapel services.

Small Groups (3 or less) for **grounds keeping, painting or cleaning.**

For More Information or
to Volunteer, Contact
Frances Booterbaugh
Volunteer Associate at
724-652-4321 ext 120

Join Us on the Mission Field

Opportunities